

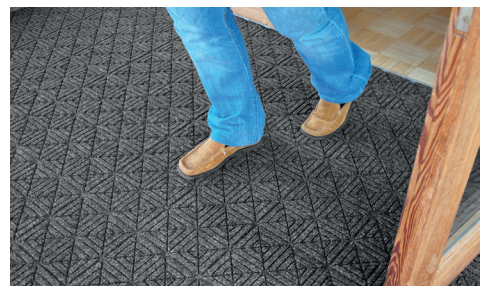
# Waterhog Eco Premier Tile

## Entrance Mats • Indoor/Outdoor

WaterHog Eco Premier Tiles are designed to provide scalable flooring solutions for large areas.



- 100% recycled fabric surface will not fade in the sun or rot in wet conditions.
- 100% resistant to bleach and sunlight.
- Heavy-duty rubber backing is made from 20% recycled rubber content and stays in place.
- Fast absorbing, quick drying polypropylene.
- Standard sizes



# Waterhog Eco Premier Tile

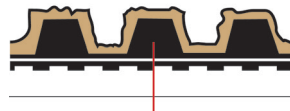
Entrance Mats • Indoor/Outdoor



Easy cut and install



Geometric Pattern



Rubber reinforced textile

## Standard Sizes (cm)

45,72 x 45,72

Sold in cases of 10  
Size Tolerance: +/- 2%  
\*black smoke is in stock in these sizes

## Specifications

### Surface

Type: 100% post-consumer PET Polyester Fiber  
Weight: 850 gr/m<sup>2</sup>  
Rubber Nubs: 11.11 mm

### Backing

Type: 100% SBR Rubber (20% recycled content)  
Thickness: 1.7 mm  
Rubber Nubs: 4.83 mm